

Package carefully and send to

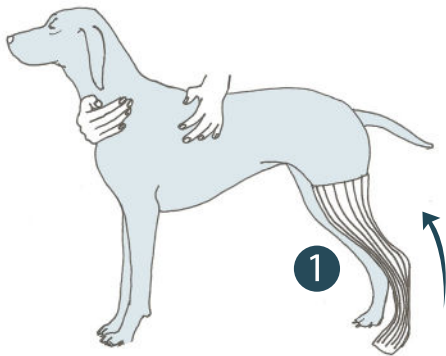
Scandi Orthopedic
Ringögatan 5
417 07 Gothenburg
Sweden

Tel: +46 31-21 41 28
E-mail: info@scandiop.se

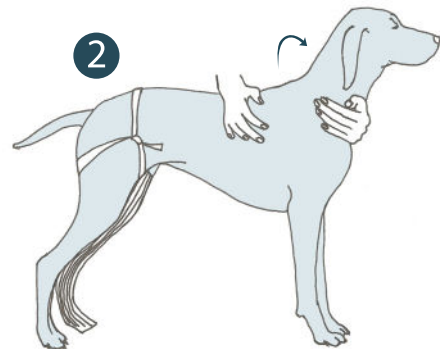
Use compression stockinette to compress the fur of the animal so it does not get stuck in the plaster.

Important! The joints must always be in a natural loading angle, with the exception of flexor tendon injury when the joints must be in an offloading angle.

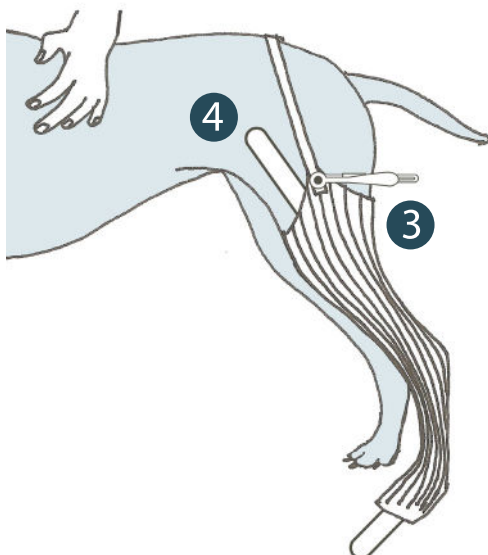
1. Cut stockinette to the desired length and thread on the hind leg. Start with the distal part of the leg at the paw, then thread it up over the knee.



2. Use a strip or Stockinette and make a loop that you attach on the opposite hind leg.



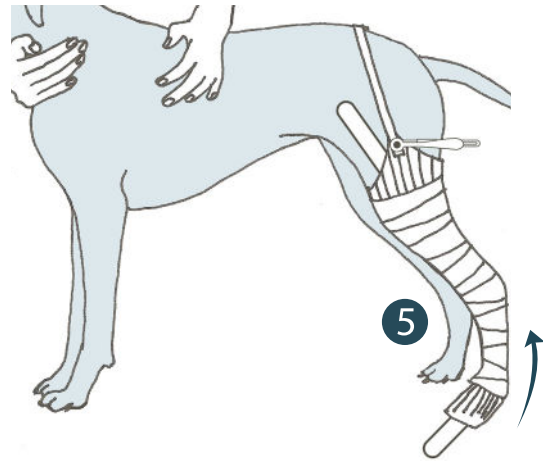
3. Tighten the anchor with a clip in the stockinette on the leg.



4. Place the cast splint under the stockinette on the leg. *The splint is used as a guide when cutting up the plaster and to protect the animal's leg.* Depending on the design of the brace, put the rail on the front or back of the leg. If the brace should sit at the back, put the rail on the front of the casting. Use only Softcast from 3M for casting.

Make sure the joints are in a correct angle, as described above.

5. Start the casting by wrapping the plaster around the leg distal from above the knee. Continue winding with about 2 layers of plaster in thickness all the way down so that the paw is included in the casting.



NOTE Be careful not to squeeze the casting at tendons, but massage it in around bone prominences.

6. When the winding of the plaster is finished, set the bone in the natural load position or desired position as the load will occur. Keep this lineup until the casting has solidified.

7. Mark with a pencil a vertical line along the rail and some horizontal guide lines. Mark the placement of tarsal joint center and if possible meta-tarsal joint.

8. Then cut up the plaster along the vertical line and open up the plaster enough to remove the bone from the casting. Tape or staple together the casting by using the horizontal lines to put it together correctly. Pack the casting carefully and send it to Scandi Orthopedic.

